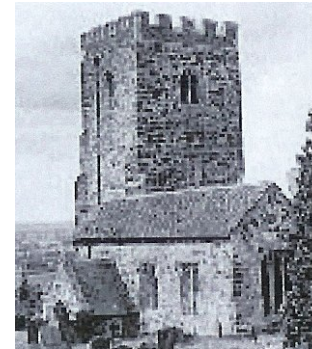


Bow Brickhill Parish News



OCTOBER 2009

Contents

Contacts	2
Parish News	3
BB Club & WI	4
Youth Club and Events	5
Events	6
Church news	7 & 9
Services	8
History Society	10
Events	11 to 13
Dates for Your Diary	14

No 366

Bow Brickhill Parish Council

Parish Clerk Julie Summerfield
12 Station Road
07904 339391

bowbrickhill.clerk@jdsummerfield.com

Councillors:

Georgy Holden 372626
Kay Leeming 372032
Beverley Thompson 372192
Stephen Archer 07788 446470

Pavilion Bookings

Gill Cannell
373602
email
bowbrickhillpavilion@gmail.com

Chair

Rupert Fairclough
37 Station Road
Tel. 367711

Pavilion Caretaker

Eddie Chesse
370486

CONTACTS

Lunch Club: Chris Loak (373768)
Stuart & Kay Leeming (372032)

Book Club: Celia on 07776 136828 celiarsherratt@yahoo.co.uk

Bow Brickhill Club: Chris Loak (373768)

Bow Brickhill F.C: Odette Holland (370904) or Roy Toombs (375151)

Brownies: Sally Pepper (375365)

Buckaneers (Model Club): Derek Giles (374494)

Church Wardens: Stuart Leeming (372032) or John Wales (373907)

Line Dancing: Jan Cade (07721 420176)

Parents & Toddlers: Alison Goodyer (368212)

Pilates: Vicki on 07914 803139 or email yogachick123@hotmail.co.uk

Website, E-Group and History Society: sue@bowbrickhill.com

Women's Institute: Sylvia Fox (378289)

Youth Club: Beverley Thompson (372192)

Thames Valley Police Non Emergency: 08458 505505

David Hopkins – Danesborough Ward Borough Councillor for Bow
Brickhill: 01908 582632 david.hopkins@milton-keynes.gov.uk

DATES FOR YOUR DIARY—OCTOBER

Thurs 1st	Youth Club. 7.00pm to 9.00pm. Pavilion
Monday 5th	Line Dancing. 7.00pm Pavilion.
Tues 6th	Bow Brickhill Club. AGM. 2pm to 4.pm. Pavilion John The Barber. 2pm to 6pm Greenways Lay-by Autumn Bazaar Planning Meeting. 8pm Church Hall.
Weds 7th	Brownies. 6.00pm to 7.15pm. Church Hall.
Thurs 8th	Parish Council Meeting. 7.30pm Pavilion
Monday 12th	Line Dancing. 7.00pm. Pavilion Book Group Contact Celia 07776 136828 for details
Tues 13th	Church Bazaar Planning Meeting. 8.00pm. Church Hall
Weds 14th	Brownies. 6.00pm to 7.15pm. Church Hall. Bow Brickhill History Society. Inaugural Meeting. 8.00pm Church Hall
Thurs 15th	Youth Club 7.00pm to 9.00pm. Pavilion Woburn Sands Big Band Society. 7.00pm for 7.30pm. Ellen Pettit Memorial Hall Woburn Sands
Mon 19th	Line Dancing. 7.00pm Pavilion.
Tues 20th	John The Barber. 2.00pm to 6.00pm Greenways Lay-by
Weds 21st	Brownies. 6.00pm to 7.15pm.
Thurs 22nd	WI. 7.30pm. Pavilion. The life and Times of Laura Ashley Competition for item beginning with the letter 'I'.
Sun 25th	All Saints Lunch Club 12.15 for 12.30pm Church Hall
Mon 26th	Line Dancing. 7.00pm Pavilion.

PARISH NEWS

New Notice Board

You may have noticed that the village has a new notice board, near to the telephone box. The Parish Council hope that this will be a lot easier for residents to find than the old one, which was against a wall on the village green.

As well as parish notices, we will be displaying information on bus and train times and about local events. If you have an event (non-commercial) that you wish to advertise on the board, please contact the Parish Clerk, Julie Summerfield.

Dog Walkers

Could we please request that you ensure you pick up after your dog; there seems to be an increasing amount of faeces on the footpath mainly at the top of Station Road, near the Pavilion and in London End Lane which is particularly unpleasant for walkers and small children going to school.



Bins are located at the Village Green, London End Lane, The Pavilion and at the lower end of Station Road.

Milton Keynes Dog Wardens are aware of the ongoing problems and will be patrolling the area and fines will be issued if you are caught. It is appreciated that some dog walkers are not from the village; if a resident sees an offender this can be reported on MK 252400

Neighbourhood Action Group

The first meeting of the NAG is on **6th October 2009 at 7.30pm** in the Woburn Sands police office.

If you would like to be part of this group which (as far as we know) covers Bow Brickhill, Little Brickhill, Wavendon and Woburn Sands, please go along and volunteer.

DEADLINE FOR NEXT ISSUE

Contributions for the next issue should be sent **by 19th October** to: Gill Cannell - email bowbrickhillpavilion@gmail.com

BOW BRICKHILL CLUB

The September meeting of the club took place on Tuesday 1st, when we spent a very busy afternoon with our raffle, quiz, and tea, followed by forty five minutes of Tai Chi. The exercises, combined with relaxing music were very much enjoyed by club members. All too soon our meeting came to an end and once again it was time to make our way home.

Tuesday October 6th will not only be our Annual General Meeting, but a celebration of ten years of the Bow Brickhill Club. All this, combined with our "Bring and Buy" sale will be sure to provide a very interesting afternoon.

We look forward to seeing all our old friends, and any visitors who would like to see what has kept us so active over the past ten years,



W.I. SEPTEMBER MEETING

At our September meeting, Liz Adams, Falls Prevention Co-ordinator with the MK Primary Care Trust, gave a presentation about falls and how to prevent them. She first listed the risk factors which include weakened muscles and loss of balance as we grow older, talking whilst walking, which can be distracting, and not recognizing our own limitations. Preventative measures to combat these risks would be to exercise for muscle strength, have regular ear and eye tests and medication reviews to help control balance, take time to recover after illness and generally take life steadily. Liz also pointed out various hazards in the home such as poor lighting, trailing wires and items left on stairs and gave advice on what to do in the case of a fall. She pointed out the help that is available from the Falls Prevention Service which is based at Bletchley Community Hospital. Members then took part in some gentle exercises designed to strengthen muscles and improve balance.

The competition for an item beginning with letter 'H' was won by Ann Pickersgill with a plait of hair from her childhood and the raffle won by Ann and Sally.



C3727291 The last railway line through Bucks

Tutor: Martin Bloxsom

Thursdays 2.30pm to 4.30pm

8 meetings from 14/01/2010



This is the Great Central Line, of which some segments still exist, which was the last mainline to London through Northamptonshire and Buckinghamshire. Martin will discuss its planning, financing, building and running, and the Day School listed below should go nicely with the course. However, they are separate, book either or both, as you wish. Fee: £54.50

C3727243 A day in the life of a station

Tutor: Roger Bowen

Sunday 18/04/2010 10.30am to 5.00pm

Venue: Bucks Railway Centre, Quainton, Aylesbury

Roger Bowen's hobbies have been in railways all his life, an interest he inherited from his father. He will talk about many aspects of railway life- we are going on a Sunday because the steam locomotives will be running. Fee: £24.50

C3727239 Visit to the Museum of History of Science

Tutor: Willem Hackmann

Saturday 15/05/2010 10.30am to 5pm

Venue: Museum of History of Science, Broad St., Oxford

The Museum is in the Old Ashmolean, the biggest of its kind when it started over 300 years ago. Willem devoted 20 years to it, and we will spend the morning there. In the afternoon, after a picnic lunch weather permitting, we will range further afield. With Willem to guide us, no-one will leave Oxford without seeing things that they never knew existed! Fee: £24.50

FOR SALE

2 X RUSTIC WOODEN SUN LOUNGERS PLUS STOOLS.

CONSTRUCTED FROM RE-CLAIMED TIMBER
PURCHASED FROM KINGS ANTIQUES, BICESTER
OFFERS INVITED

PLEASE CONTACT CLARE ON 07973 367117



WORKERS EDUCATIONAL ASSOCIATION

All meetings at Rectory Cottages, Church Green Road, Bletchley unless stated otherwise

C3727191 Georgian England Tutor: Adam Smith
Wednesdays 10.30am to 12.30pm
10 meetings from 13/01/2010

Venue: York House Centre, London Rd., Stony Stratford
This is the social and industrial of Georges I to IV, 1714-1830. Stylish architecture, industry thriving, a transport system that was very fit for purpose (i.e. canals). So have we moved a long way ahead since then? Well, maybe not, actually! Fee: £68.00

C3727190 A voyage into foreign poetry Tutor: Jackie Green
Thursdays 10.30am to 12.30pm
6 meetings from 14/01/2010

“Foreign” here means from other parts of the English speaking world, it is not a course about the difficulties and subtleties of translation. Nevertheless, the “voyage” to Australia, America and the Caribbean will bring us to plenty of new literary landscapes and new poet names. Fee: £40.80

C3727288 Latin for everyday life tutor: Mark Walker
Saturday 27/02/2010 10.30am to 5.00pm

Few people speak Latin everyday, but it is nevertheless all around us, e.g. in inscriptions and in plant names; and we clearly can't manage without it because we do indeed slip in Latin words to everyday speech, because they are neat and concise. That wasn't an ad hoc e.g., I used it on purpose. Fee: £24.50

C3727189 Colour in Art and Science Tutor: Willem Hackmann
Tuesdays 10.30am to 12.30pm
10 meetings from 02/03/2010

There are so many links - how artists colours - natural or synthetic - are made; how dyes rejuvenated the textile industry; the colours revealed by the microscope; what did oil paintings and frescoes look like hundreds of years ago when they were created; does the mind link colours to sounds ... and so on; and in any case which records colours better, the eye or the camera? Fee: £68

YOUTH CLUB

July was an eventful month for the Youth Club, with a visit to the Malleson family's woodland (many thanks, Andy and Sue) a barbecue at the Pavilion, and then a day trip to Wicksteed Park, kindly subsidised by the Parish Council.

We started again on 3rd September and on 17th September. 18 members braved the high ropes and climbing walls at the Caldecotte Project. You may have ropes attached, but standing on top of a 30 foot pole and jumping onto a trapeze still takes nerves of steel!



For full details of our programme, see our website at www.bbyc.org.uk.

If you are interested in helping out, either regularly or with occasional activities, please contact Stuart Leeming on 372032 or Beverley Thompson on 372192.

WOBURN SANDS BIG BAND SOCIETY

THURSDAY 15th October 2009
7pm for 7.30 pm
Ellen Pettit Memorial Hall
Woburn Sands

Anniversary Special

Sheila Tracy : “The Bands of Ted Heath & Geraldo”
and

Ian Burns : “The Art of the Male Vocalist

ENTRY: £2.00,
Non members £3.00

Free car parking available behind the shops in the High Street, entry from Russell Street

Membership application forms available at the desk.

For further information call
David Higgs, 01908 583937, or Rex Harris, 01908 281235

COMMUNITY COHESION - A SUSTAINABLE APPROACH

Saturday 17th October,
ACE Centre, Stony Stratford
Tutor: Rosemary Clarke
FREE OF CHARGE



What do we mean by a Sustainable Community?
Would you like your community to be more vibrant? Could you do with some help in deciding what to do first? Would you like to know what other communities have achieved, and what help might be available?

If you've answered "Yes" to some of these questions, this could be the course for you.

The day will begin by exploring the positive aspects of where we live, and use these to discover the 8 components of a sustainable community. We will then look in greater depth at those aspects which are of greatest interest to the course participants, investigating practical ways of making a difference in our own communities.

There will be a series of activities which will include thinking individually, working in small groups and sharing information with everybody.



**"THE DREAM OF GERONTIUS"
22ND NOVEMBER
7.30PM
MILTON KEYNES THEATRE**

Elgar's beautiful oratorio, charting the progress of a soul from death to eternal life, is being performed by Danesborough Chorus and the Milton Keynes Chorale on Sunday 22nd November at 7.30 p.m. in Milton Keynes Theatre.

Internationally renowned soloists - Jean Rigby (mezzo soprano), Justin Lavender (tenor) and Benjamin Bevan (bass-baritone) complete the line-up for one of the choral repertoire masterpieces - not to be missed!

Tickets £20, £17, £14, £10 & £8 and concessions.
To make sure of your tickets, phone the box office on 01908 583460.
(Tickets also available from MK Theatre, with booking fee.)



THREE PARISHES OUTING



BANBURY
FARE: £6.50
WEDNESDAY 21ST OCTOBER 2009
DEPARTING 10:00 AM

Pick Up Points

Contact for tickets

Bow
Brickhill

Church Road; Greenways

Julie
07904 339391

Available to all parishioners over 60 living in the three parishes
Sponsored by: Bow Brickhill Parish Council;
Wavendon Parish Council; Woburn Sands Town Council

In conjunction with

AGE Milton Keynes
Concern

**THE PARISH CHURCH OF ST MICHAEL
WOBURN SANDS
CHRISTMAS TREE FESTIVAL
Friday 11th December to Sunday 13th
December**



The Festival is a church fundraising event as well as supporting Keech Cottage Children's Hospice in Luton.

Admission is £2.50 (£2 concessions) and £1 for children.
There will be seasonal refreshments and live music.

The Festival will conclude with a Christingle Service
at 3pm on Sunday 13 December.

We warmly invite you to come and view our forest of Christmas Trees.

BOW BRICKHILL HISTORY SOCIETY

The inaugural meeting of this new organisation will take place at
8.00 pm
Wednesday 14th October
in the Church Hall.

There will be some interesting photos for you to look at and historical documents too.

Do come along and join others to research and preserve the rich history of our village - everyone is welcome.



For more information contact Sue Malleson 01908 372376 or email sue@bowbrickhill.com.

TO RENT

Lovely family home in southern Spain beside the sea.
Sleeps 7.

Fully equipped for all year round use.

Good location for visiting Seville, Cordoba, Grenada, Cadiz, Jerez, Marbella & Africa.

Contact Olivia Harrison-Read on 372739.



GROWING DISCIPLES

The first session of the second run of Growing Disciples, a monthly course to encourage people with any form of leadership responsibility inside or outside of the Church takes place on



Saturday 10th October

This day-long beginning will be complemented by monthly 2 hour evening sessions on Tuesdays.

For further information, please contact
John Waller john.waller1@virgin.net or
Rosemary Clarke rosemary.clarke@googlemail.com Tel: 370811



AUTUMN BAZAAR

SATURDAY 21st
NOVEMBER



2.00pm TO 4.00pm
The Pavilion

The Autumn bazaar is the major fundraising event for the Church and a planning meeting to organise stalls and stallholders will be held on **Tuesday October 13th at 8.00pm at the church hall.**

All are welcome to the meeting but if you are unable to attend but would like to be involved with the bazaar on the day or have any new ideas for stalls or games please contact Kay Leeming on 372032.

BRIC-A-BRAC STALL, AUTUMN BAZAAR

Once again Wendie Mills and Diana Kesterton are appealing for donations to their stall which, thanks to your generosity, raises well over £100 each year for church funds

We would remind you that we cannot accept clothing or large items such as furniture and we cannot accept any items on the day of the Bazaar.

Please give any donations to Wendie at 52 Station Road or phone her on 374745 to arrange collection. Many thanks

SERVICES IN THE BENEFICE

**Bow Brickhill
All Saints**

4th October
9.30am Holy Communion

11th October
11.00am Family Service

18th October
11.00am Matins

25th October
8.00am Holy Communion



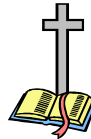
**Great Brickhill
St Mary the Virgin**

4th October
11.00am Harvest Service

11th October
9.30am Morning Worship
6.00pm Evensong

18th October
9.30 Holy Communion

25th October
11.00am Family Service



Stoke Hammond St Luke

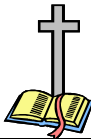
4th October
11.00am Family Service

11th October
9.30am Holy Communion

18th October
8.30am Holy Communion

11.00am Church Anniversary at
Methodist Church

25th October
9.30am Morning Worship



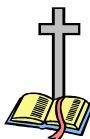
**Little Brickhill
St Mary Magdalene**

4th October
No Service

11th October
11.00am Harvest Festival

18th October
11.00am Family Service

25th October
9.30am Holy Communion



HARVEST AUCTION



On Monday 14th September the annual auction of produce in aid of church funds took place at the Wheatsheaf.

Eager bidders, encouraged by the auctioneering skills of Mike Parker, ensured the success of the evening raising the excellent sum of **£379**.

Our thanks go to Chris and Sue at The Wheatsheaf for hosting the event; Mike Parker for another auctioneering triumph and John Payne for again running the raffle so successfully.

A big thank you also goes to all who supplied produce and came along giving their support so generously in buying it all back.

ALL SAINTS LUNCH CLUB



On September 27th 21 guests and volunteers enjoyed an excellent lunch with a special cake to mark the 5th anniversary of the lunch club.

The October meeting will take place on **Sunday October 25th** at the usual time of 12.15pm for 12.30pm at the church hall. All are welcome.

For more details or to book in contact Kay or Stuart on 372032 or book with Chris Loak at the Bow Brickhill club.

CHURCH ROTAS



OCTOBER

4th
11th
18th
25th

FLOWERS
Mrs S Willis
Mrs S Willis
TBA
TBA

CLEANING
Mrs S Boyes
Mrs S Boyes
Mrs J Lousada
Mrs J Lousada