

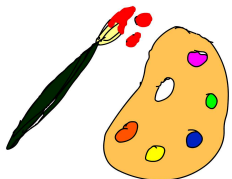
Bow Brickhill Club

The April meeting of the Club was held in the Pavilion on Tuesday April when our main objective was to choose and discuss a venue for our summer outing. The result of our ballot proved that most of our members were in favour of a visit to the Suffolk coast. Negotiations are now taking place with coach companies to find the most interesting places to visit, in and around Southwold and Aldeburgh.

After we had completed our quiz, drawn the raffle, and had tea, there was very little time left to have a quick Bingo session before closing the meeting.

Our next meeting will be on Tuesday May 4th when our old friend Bill Billings will be talking to us about art in Milton Keynes. Bill's talk will be supported by slides and photographs, so you may be sure that there will be plenty of opportunity for discussion about such things as dinosaurs and concrete cows!

We look forward to seeing all our members, old and new, at the Pavilion at 2.00pm on Tuesday May 4th.



Village Gardener in the News

Last month Lynda Quigley of Church Road was featured on the centre page spread of 'Garden News', a national weekly garden newspaper. The feature showed the difference between her cottage garden and the tropical 'Winter Gardens' where she has worked on behalf of Frosts over an 18 years.

Lynda has been a gardener and florist since the age of 13. She has now decided to take on a little private work, such as wedding and funeral flowers, and light garden maintenance. If you would like to contact Lynda her number is 644622 or call at 16, Church Road.



Mobile Library

By the War Memorial
from 11 -11.15 am on
Friday May 28th



We are trying to find out whether this service has been reduced to once a month now.

Copy deadline

We welcome your news for the next edition. Please deliver contributions by **May 19th** to:
Tim Holden: 31 Greenways, Bow Brickhill. tel 372626
or email g.m.holden@open.ac.uk

Bow Brickhill Parish News



May 2004

No. 306

Contents

Parish News	2
Notices and news	3
Services	4
Letter from the Rector	5
Church News	6
Church Rotas	7
Useful Info	8
B.B. Club	8
School	8

PARISH NEWS

COUNCILLOR VACANCY

The Parish Council would welcome applications from anyone interested in becoming a Parish Councillor. Anyone who would like to be considered for co-option to fill the current vacancy should make themselves known to the Parish Clerk.

YOUTH CLUB

The Parish Council were delighted to receive a report on the activities of the Youth Club which has been going well and regularly has around 20 young people from the village attending.

SAFETY MATTING

We are happy to report that a grant to install safety matting under the swings in the park has now been paid into the Parish Council account. This will enable the work to go ahead and we hope that it will be done as quickly as possible.

ANTI-SOCIAL BEHAVIOUR

Some young people have been seen riding motorbikes on the pavements and playing fields. This matter has been reported to the Police and visits have been made to those concerned. If you behaviour of this sort please report it to the Parish Clerk who will contact the Police. Behaviour of this kind could result in an anti-social behaviour order.

PARISH CLERK

Mrs Susan Rumens, 4 Phebe Lane, Wavendon MK17 8LP tel. 587704
srumens@btopenworld.com

2

DATE OF NEXT MEETING

The **Annual General Meeting** of the Parish Council will be held on **Thursday May 15th**, at **7:30pm** in the Pavilion, Rushmere Close.
All welcomed to attend

Neighbourhood Watch

The Milton Keynes Neighbourhood Watch Association are urgently looking for new members to join the Committee. If you have an interest in your community with a desire to progress Neighbourhood Watch throughout the Milton Keynes police area and could spare a few hours a month, the Committee need you!

If you are interested please contact Christine Duncan on 01908 686169 who will pass your details on to a Committee Member who will contact you to discuss further.

The Association are especially looking for people from the Stony Stratford, Wolverton, Bletchley, Newport Pagnell and rural areas so that all police sectors are fully represented on the Committee.

The Committee also needs a Secretary, either as a full Committee member or someone who could attend a monthly meeting to take notes and produce the Minutes.

miltonkeynes.ringmaster@thames-valley.police.uk

7

Bow Brickhill Football Club

Presentation Evening
in the Pavilion
Saturday May 15th
Licensed bar and disco

Annual Six-a-Side Football
Tournament
Sunday 23rd May

If any organisation in the village would like to have a stall of their own at the event to raise funds for their own club they would be very welcome.

For further details of either event contact Roy Toombs 375151 or Odette Holland 370904



Bow Brickhill W.I

For the Meeting held at the Pavilion this month the speaker was Lesley Bunker –Nixon, who explained in great detail the problems arising from Animal Control which previously was known as Pest Control, in the Home and Garden. Members were left with a clear insight to the enemy we fight daily in our home environment from Wasps to Rats to Bed bugs and Ants.

It was with great pride that we honoured Joan Varney, who this month can proudly claim to have been a W.I member for 50years, commencing in Old Bletchley in April 1954, this event has been acknowledged by a Card from the County Chairman, also by our Group Convenor, and within our Institute a card and a bouquet of flowers.

Joan also treated us with very naughty cream cakes. Sally Robinson won the competition for a Pot Plant.

Chris Davey, Joyce Bradshaw and Frances Chopping won the raffle. Our next meeting will be on May 27th at the Pavilion at 7.30pm.
Pat Pullinger (President)
01908 676500

Advance notice:
Bedford Morris Men will dance
outside the Wheatsheaf Pub
Wednesday 23rd June 8.00pm.

Miss it - Miss out

Roving Meal Saturday 22 May

Last Call for Orders! Please book your place on the village roving meal by Thursday 6th May. This is an opportunity to enjoy good food, meet new people in the village, catch up with old friends and be entertained in a variety of homes.

Cost: Provide one course for a small group of people and donate £5/person for church funds

Numbers: Unlimited - but you need to book now!

Contact: Helen (373344) or Rosemary (370811)



House Group

A group of us meet together on the 1st and 3rd Tuesdays of the Month for Bible study, prayer and mutual support.

Anyone who would like to join us is most welcome. The venue is in a different home each time so if you are interested in coming along ring Steve Valledy on 01908

Sunday School

Next Sunday School is on May 29th, 11 am in the Church Hall. Come and join the fun.



Church Rotas

	Flowers	Cleaning	Readers
May 2	Brownies	Brownies	As notified
May 9	Mrs R.Parker	Mrs P.Hewitson	As notified
May 16			As notified
May 23	Mrs N.Valledy	Mr S.Valledy	As notified

Bow Brickhill Youth Club

Thursday the 15th proved to be a great club night with fun for all. Outdoor rugby and football was organised by Jack and overseen by Claire. Indoors the craft table worked superbly with both girls and guys participating, well done Simone! Steve on tuck-shop was very busy, with his great sense of humour he had it all under control and kept careful watch on outside events.

Dusk saw the end of outdoor activities and great fun inside with a hockey skills contest the prize was won by Martin, but the girls followed close behind. Pete congratulates everyone for being very sporting, competitive and well behaved. Sue who was not directly involved in any particular event provided her normal regular presence and enthusiasm and reminded us to congratulate our Chairman Duncan and his wife Julie for their most recent edition to their family.

A reminder that the next club meeting is on **Thursday 6th of May**. The Youth club hope to use the village website for informing the village of interesting events relating to the youth club that they think the village might wish to know about. If youth club members would like to contribute to the website please be mature with your entries and keep them sensible.

There will be a barbeque for all youth club members and their families to which villagers are warmly invited. This will take place on the afternoon of **Sunday May 30th**. Contact a member of the Youth club committee for further details.

Three Parishes Shopping Trips

Since January 2004, monthly shopping trips have been organized for the three parishes, Bow Brickhill, Woburn Sands and Wavendon. These are proving very successful, with passenger numbers increasing every month. On April 14th, of the , forty six passengers ten were from Bow Brickhill.

The April trip took us to Oxford, which, on a beautiful spring day, made a very entertaining outing. Not only was there an opportunity for shopping, but many interesting sites to visit, or, if one bus trip wasn't enough, there were guided tours on open topped buses, which you could join or leave as you chose.

Our next trip will be to St Albans on Wednesday May 12th. The good news being that we now have an allocation of fifteen tickets for Bow Brickhill, but for this trip we have had to increase the price per ticket to £2.50. The price for Under-60s wishing to accompany older passengers, will be £6.00

SERVICES IN THE BENEFICE**Great Brickhill****St Mary The Virgin****2nd May:**

9.30 Holy Communion

9th May:

9.30 Morning Worship

6.00 pm Evensong

16th May:

9.30 Holy Communion

23rd May:

11.00 Family Service

30th May

11.00 Benefice Service

Little Brickhill**St Mary Magdalene****2nd May:**

6.00 pm Holy Communion

9th May:

11.00 a.m. Morning Worship

16th May:

11.00 Family Service

23rd May:

9.30 Holy Communion

Stoke Hammond**St Luke****2nd May:**

9.30 Holy Communion

9th May:10.30 United Village Praise
(in the Community Centre)**16th May:**

4.00 pm Family Service

23rd May:

9.30 Morning Worship

May Services**Bow Brickhill****All Saints****2nd May****11.00 Family Service****9th May****11.00 Holy Communion****16th May****6pm Evensong****23rd May****8.00 Holy Communion****30th May****Benefice Service
at Great Brickhill****Letter from the Rector**

Dear Friends,

We Believe in Life Before Death

This is the theme for this year's Christian Aid Week, which runs from May 9th to 15th.

It reminds us that the Christian faith is not only about the hope of eternal life with God in Jesus Christ, but also that we are called to live this present life as God's servants. So we have a responsibility to nurture and care for the natural world, and use it's riches in a fair and loving way, for the good of all.

Jesus taught us that every person is our neighbour, and especially anyone who is in need, so we cannot be content to live in a world where millions of people lack the basic necessities that we take for granted.

The information for Christian Aid Week includes some positive stories of how people in different parts of the world are being supported to take action, to care for the sick and injured, and to develop health care and education.

Of course there are other charities doing important work as well, but Christian Aid Week is one opportunity for us to stop and think about all the good things that we have, and to think what we could do, to play at least a small part in making this world a better place for all God's people.

Revd. John Waller

The Rectory, 10 Pound Hill, Great Brickhill MK17 9AS
(01525) 261062
john.waller1@virgin.net

Bow Brickhill Church Choir
and St James Singers
**Present a Concert of Choral
Works**
Saturday June 19th 7.30 pm.

Following last years successful concert Bow Brickhill
Choir welcome the St James Singers back for a return
visit.



Tickets will be available from the Church Wardens, or
can be purchased on the door.

Contact Stuart 372032 or John 373907

Bow Brickhill Church Choir
and St James Singers
**Present a Concert of Choral
Works**
Saturday June 19th 7.30 pm.

Following last years successful concert Bow Brickhill
Choir welcome the St James Singers back for a return
visit.



Tickets will be available from the Church Wardens, or
can be purchased on the door.

Contact Stuart 372032 or John 373907

More tree work at London End Lane

You may have noticed a flurry of activity at the end of London End Lane over the Easter weekend. Here's the explanation.

After the emergency felling of the old Ash tree, now almost two years ago, we felt we had to get the state of our piece of the hillside under control. In spite of having owned the land for about 14 years, and having made previous attempts to improve the condition of the planting, we decided to make another attempt to save some of the existing trees, plant more and tame the bracken. Our efforts were still not sufficient and the quality of the vegetation continued to go downhill, with more trees dying, bracken encroaching, dumping of rubbish and, sadly, vandalism.

We called in a firm of landscape professionals for some expert advice. They started by conducting a full survey of the vegetation to identify healthy trees and any other good quality planting. The survey was also expected to give us a better understanding of the soil conditions and to provide a basis for a planting programme. The results of the survey were worse than even we feared: almost all the trees were dead, diseased or dangerous. The best two are the oaks towards the lower part of the site, although these are still not top quality. Higher up, there are also about six small younger trees which are OK. Apparently, the deer and rabbits are responsible for the failure of

our previous attempts at tree planting. We were particularly sad to lose the saplings we planted to mark the births of our sons.

The survey report recommended removal of all the dead trees and other poor quality vegetation before the end of April (thus avoiding the nesting season). We needed to move quickly, hence the activity at Easter. Once this is completed, the landscape people will be able to assess the potential, map the soil conditions and try to locate the water source or spring line which we all think is there but which we have never been able to find. A new planting plan can be drawn up and, once the bracken has been controlled, we can begin to plant. To avoid further damage by deer and rabbit we expect to have to fence the land, for the time being at least. We hope to be able to replace or mask the fencing with hedgerow in due course.

So, although the hillside does look a little bare at present, we hope this will be temporary and that, before long, we can begin planting.

Frank Ainscow and Kerry Mashford

11th April 2004

P.S. Meanwhile, there is a surplus of wood on the land. Anyone wanting some is welcome to help themselves – but please be considerate of our neighbours along the Lane.

More tree work at London End Lane

You may have noticed a flurry of activity at the end of London End Lane over the Easter weekend. Here's the explanation.

After the emergency felling of the old Ash tree, now almost two years ago, we felt we had to get the state of our piece of the hillside under control. In spite of having owned the land for about 14 years, and having made previous attempts to improve the condition of the planting, we decided to make another attempt to save some of the existing trees, plant more and tame the bracken. Our efforts were still not sufficient and the quality of the vegetation continued to go downhill, with more trees dying, bracken encroaching, dumping of rubbish and, sadly, vandalism.

We called in a firm of landscape professionals for some expert advice. They started by conducting a full survey of the vegetation to identify healthy trees and any other good quality planting. The survey was also expected to give us a better understanding of the soil conditions and to provide a basis for a planting programme. The results of the survey were worse than even we feared: almost all the trees were dead, diseased or dangerous. The best two are the oaks towards the lower part of the site, although these are still not top quality. Higher up, there are also about six small younger trees which are OK. Apparently, the deer and rabbits are responsible for the failure of

our previous attempts at tree planting. We were particularly sad to lose the saplings we planted to mark the births of our sons.

The survey report recommended removal of all the dead trees and other poor quality vegetation before the end of April (thus avoiding the nesting season). We needed to move quickly, hence the activity at Easter. Once this is completed, the landscape people will be able to assess the potential, map the soil conditions and try to locate the water source or spring line which we all think is there but which we have never been able to find. A new planting plan can be drawn up and, once the bracken has been controlled, we can begin to plant. To avoid further damage by deer and rabbit we expect to have to fence the land, for the time being at least. We hope to be able to replace or mask the fencing with hedgerow in due course.

So, although the hillside does look a little bare at present, we hope this will be temporary and that, before long, we can begin planting.

Frank Ainscow and Kerry Mashford

11th April 2004

P.S. Meanwhile, there is a surplus of wood on the land. Anyone wanting some is welcome to help themselves – but please be considerate of our neighbours along the Lane.