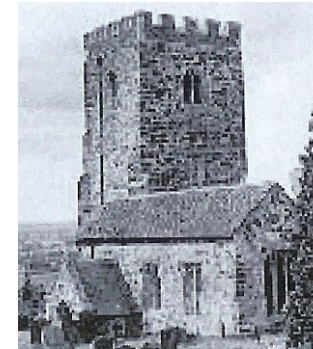


# Bow Brickhill Parish News



## JULY and AUGUST 2010

DATES FOR YOUR DIARY—AUGUST	
Monday 2nd	Line Dancing. 7.00pm Pavilion.
Tuesday 3rd	Bow Brickhill Club 2.00-4.00pm Pavilion.
Wednesday 5th	Bow Brickhill History Society. 7.30pm Wheatsheaf
Monday 9th	Line Dancing. 7.00pm Pavilion. Book Club. Contact Beverley 372192 for info
Tuesday 10th	John the Barber. 2pm to 6pm Greenways Layby
Thursday 12th	Click and Clack. 7.30pm The Wheatsheaf
Monday 16th	Line Dancing. 7.00pm Pavilion.
Sunday 22nd	All Saints Lunch Club. 12.15pm for 12.30pm. Church Hall
Monday 23rd	Line Dancing. 7.00pm Pavilion.
Tuesday 24th	John the Barber. 2pm to 6pm Greenways Layby
Thursday 26th	WI. 7.45pm Pavilion. Bedford and Milton Keynes Waterways. Open to non members
Monday 30th	Late summer Bank Holiday

NEXT ISSUE—SEPTEMBER
Contributions for the September issue should be sent by
23rd August
to: Gill Cannell - email <a href="mailto:bowbrickhillpavilion@gmail.com">bowbrickhillpavilion@gmail.com</a>

### Contents

<b>Contacts</b>	<b>2</b>
<b>News &amp; History Society</b>	<b>3</b>
<b>Outing and WI</b>	<b>4</b>
<b>BB Club and Events</b>	<b>5</b>
<b>Events</b>	<b>6</b>
<b>Church News</b>	<b>7</b>
<b>Church Services</b>	<b>8 &amp; 9</b>
<b>More Church News</b>	<b>10</b>
<b>Youth Club and Events</b>	<b>11</b>
<b>Trains</b>	<b>12</b>
<b>Bedford River Festival</b>	<b>13</b>
<b>Events</b>	<b>14</b>
<b>Dates for Your Diary</b>	<b>15 &amp; 16</b>

No 374

## Bow Brickhill Parish Council

**Parish Clerk** Julie Summerfield  
12 Station Road  
07904 339391

[bowbrickhill.clerk@jdsummerfield.com](mailto:bowbrickhill.clerk@jdsummerfield.com)

### Councillors:

Georgy Holden 372626  
Kay Leeming 372032  
Beverley Thompson 372192  
Ann Sidgwick

### Pavilion Bookings

Gill Cannell  
373602  
email  
[bowbrickhillpavilion@gmail.com](mailto:bowbrickhillpavilion@gmail.com)

### Chair

Rupert Fairclough  
37 Station Road  
Tel. 367711

### Pavilion Caretaker

Eddie Chesse  
370486

## CONTACTS

Lunch Club: Kay and Stuart on (372032)

Book Club: Beverley Thompson (372192);  
[beverleydianethompson@gmail.com](mailto:beverleydianethompson@gmail.com)

Bow Brickhill Club: Chris Loak (373768)

Bow Brickhill F.C: Odette Holland (370904) or Roy Toombs (375151)

Brownies: Sally Pepper (375365)

Buckaneers (Model Club): Derek Giles (374494)

Church Wardens: Stuart Leeming (372032) or John Wales (373907)

Click & Clack: Elaine Boscott (377543) or Gill Cannell (373602)

Line Dancing: Jan Cade (07721 420176)

Parish News: Sally Robinson [sallyhawtin@hotmail.co.uk](mailto:sallyhawtin@hotmail.co.uk)

Website, E-Group and History Society: [sue@bowbrickhill.com](mailto:sue@bowbrickhill.com)

Women's Institute: Sylvia Fox (378289)

Youth Club: Beverley Thompson (372192)

Thames Valley Police Non Emergency: (08458 505505)

Email: [RuralSouthNHPT@thamesvalley.pnn.police.uk](mailto:RuralSouthNHPT@thamesvalley.pnn.police.uk)

David Hopkins – Danesborough Ward Borough Councillor for Bow  
Brickhill: (01908 582632) [david.hopkins@milton-keynes.gov.uk](mailto:david.hopkins@milton-keynes.gov.uk)

## DATES FOR YOUR DIARY—JULY

Thursday 1st	Youth Club. 7.00pm to 9.00pm Pavilion
Sunday 4th	Chiltern West Gallery Quire Concert. 10.45am Church
Monday 5th	Line Dancing. 7.00pm Pavilion.
Tuesday 6th	Bow Brickhill Club. Pavilion. 1.30pm Outing To Woburn Safari Park
Wednesday 7th	Brownies. 6.00pm to 7.15pm. Church Hall Bow Brickhill History Society. 7.30pm. Wheatsheaf
Thursday 8th	Parish Council Meeting. 7.30pm Pavilion Click and Clack. 7.30pm. The Wheatsheaf
Saturday 10th	Woburn Sands Folk Festival. 10.00am to 8.00pm. Edgwick Farm Woburn Sands
Monday 12th	Line Dancing. 7.00pm Pavilion. Book Club. Contact Beverley on 372192
Tuesday 13th	Mobile Barber 2pm to 6pm Greenways Layby Church Hall
Thursday 15th	Youth Club. 7.00pm Pavilion. Barbeque Woburn Sands Big Band 7.30pm Ellen Pettit Memorial Hall
Saturday 17th	Bedford River Festival—Late train back to village
Sunday 18th	Bedford River Festival—Special train service
Monday 19th	Line Dancing. 7.00pm Pavilion.
Thursday 22nd	WI. 7.30pm. Pavilion Committee supper. Competition for item beginning with letter P
Sunday 25th	All Saints Lunch Club. 12.15 for 12.30 Church Hall
Monday 26th	Line Dancing. 7.00pm Pavilion.
Tuesday 27th	Mobile Barber 2pm to 6pm Greenways Layby
Wednesday 28th	3 Parishes Outing to Stratford-upon-Avon

## THE CHILTERN WEST GALLERY QUIRE

Chiltern West Gallery Quire is paying the Church a visit on **4th of July** at **10.45am** for a short concert of west gallery music.

This is the same sort of music as depicted in 'A Village Choir' - the picture which Thomas Webster painted in 1847, drawing on our church for the setting and, as local legend would have it, village residents for the characters.

The Chiltern Quire sings in four parts supported by instruments including bassoon, oboe, clarinet, flute, cello, violin, viola and a serpent - and they will be dressed in costume. This is the nearest you're going to get to getting the real picture!

So do come along to see and hear what inspired Thomas Webster.



Music in the Brickhills will be giving its annual performance of

**Handel's Messiah**  
**7.30 pm**

**Sunday 3rd October**  
**St Mary the Virgin, Great Brickhill.**

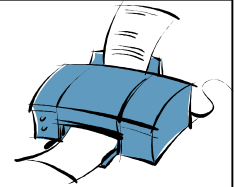
Now in its fourth year, the Music in *the Brickhills Messiah* always attracts a large audience so don't miss out on your chance to enjoy Handel's fabulous music performed by the best local amateur singers and musicians. The famous Hallelujah! chorus, complete with its orchestra including trumpets and kettle drums, is always a highlight of a superb evening's entertainment.

Tickets are available on the door but we advise you to buy in advance. Please contact Jerry Breslin on 01908 582952. All proceeds to charity.

*Messiah*  
2010

## NEW SCANNER AND PRINTER

The Parish Council has recently purchased an A3 multi-use machine for use by village clubs. It can scan and print up to and including A3 size. A small charge per copy will be made towards the cost of replacement ink cartridges:



A3: 25p per copy

A4: 15p per copy

At present this is located at 17 Greenways. Please contact Gill or Andy on [candishtowers@gmail.com](mailto:candishtowers@gmail.com) if you wish to use it.

## PLANTERS

Our thanks to Diana and Gill for the colourful displays in the planters at the edges of the village – they really do look a picture.



PS from Gill – I've just planted up the bed near Greenways with the summer geraniums, but already a couple of plants have been taken out. If you see anyone tampering with the display please let me know!

## BOW BRICKHILL HISTORY SOCIETY

Bow Brickhill History Society are busy preparing a Heritage Tour Leaflet for the village.

The Heritage Tour will take the form of a leaflet detailing a walk around the village highlighting buildings, people and events from our rich and varied past!


We are planning to launch this project on

**Saturday 13th November**

which is historically the exact date of The Bow Brickhill Feast.

We are planning a Pork Meal followed by Bow Brickhill Pudding. We very much hope that you will all be able to join us and ask that you make a note in your diary now!

Details to follow in due course.



### 3 PARISHES OUTINGS


**STRATFORD UPON AVON**  
FARE: £7.00

**WEDNESDAY**  
28<sup>th</sup> JULY  
Departing 9:30am  
Returning 4.00pm

	Collection points	Tickets and info
Bow Brickhill	Church Road; Greenways	Julie 07904 339391

Available to all parishioners over 60 living in the three parishes  
Sponsored by: Bow Brickhill Parish Council;  
Wavendon Parish Council; Woburn Sands Town Council

In conjunction with



Milton Keynes

	BEDFORD TO BLETCHLEY								
	1	2	3	4	5	6	7	8	9
<b>BLETCHLEY</b>	11.00	12.00	13.00	14.00	15.00	16.00	17.00	18.00	19.00
Fenny Stratford	11.03	12.03	13.03	14.03	15.03	16.03	17.03	18.03	19.03
Bow Brickhill	11.07	12.07	13.07	14.07	15.07	16.07	17.07	18.07	19.07
Woburn Sands	11.11	12.11	13.11	14.11	15.11	16.11	17.11	18.11	19.11
Aspley Guise	11.14	12.14	13.14	14.14	15.14	16.14	17.14	18.14	19.14
Ridgmont	11.17	12.17	13.17	14.17	15.17	16.17	17.17	18.17	19.17
Lidlington	11.21	12.21	13.21	14.21	15.21	16.21	17.21	18.21	19.21
Milbrk (Bdfrdshr	11.24	12.24	13.24	14.24	15.24	16.24	17.24	18.24	19.24
Stewartby	11.28	12.28	13.28	14.28	15.28	16.28	17.28	18.28	19.28
Kempston Hardwck	11.31	12.31	13.31	14.31	15.31	16.31	17.31	18.31	19.31
Bedford St.Johns	11.38	12.38	13.38	14.38	15.38	16.38	17.38	18.38	19.38
<b>BEDFORD</b>	11.44	12.44	13.44	14.44	15.44	16.44	17.44	18.44	19.44

Timetable for the Fireworks  
Flyer on  
**Saturday 17 July**  
is as follows:

Depart

Bedford	23:10
Midland	
Bedford St John	23:13
Kempston	23:20
Stewartby	23:23
Millbrook	23:27
Lidlington	23:30
Ridgmont	23:35
Aspley	23:38
Woburn	23:41
Bow	23:45
Fenny	23:48
Bletchley	23:53

### WOBURN SANDS FOLK FESTIVAL

**Saturday 10th July**  
10am till 8pm  
Edgewick Farm, Woburn Sands.

Many Local Artists, Stalls, All day Music, Attractions for children, Free Entry for All.  
Details on Web site [www.wsff.co.uk](http://www.wsff.co.uk)

**WI**

Bow Brickhill W.I cordially invite you to join them at

**The Pavilion**  
**on August 26th**  
**at 7.45pm**

cost £2.00  
for an  
Illustrated Talk on "Our Local Canal - The Grand Union"

Could it be a gentle stroll, or an energetic walk? Things to see and places to go. What a wonderful way for some quality time.

For further information please contact P.Pullinger 01908 676500



The Marston Vale Line (Bedford – Bletchley) is a great way of getting out and about this summer. There are hourly services on Mondays to Saturdays from Bow Brickhill to both Bedford and Bletchley from 6 a.m. – 9 p.m.

Bedfordshire concessionary travel pass holders travel at half price! Also with a GroupSave ticket up to four adults can travel for the price of two on off-peak services with up to four children travelling with the group for just £1 each – under 5s go free.

Marston Vale Community Rail Partnership (MVCRP) was formed in February 2007 to act as a bridge between the local communities and *their* railway.

### Special Services for Bedford River Festival!

In addition to the normal hourly service on **Saturday 17<sup>th</sup> July** MVCRP has arranged a special late evening 'Fireworks Flyer' leaving Bedford at 11:10pm and calling at all stations.

There will also be a special hourly service on **Sunday 18<sup>th</sup> July** from 11am to 8pm Timetable on page 13.

### Special Offers at Local Attractions!

#### Bletchley Park

20% discount on entry fess, valid on all types of ticket, adult, concession, child. Admission charges are season tickets giving you free entry for one year from the date of your first visit. Just show your valid train ticket for the discount! Offer valid until 31<sup>st</sup> October 2010.

#### Kidsworld Bedford

20% discount off children's entry. Kidsworld Bedford is a children's activity centre in Kingsway, a few minutes walk from Bedford St. Johns Station. Just show your valid Marston Vale train ticket for the discount! Offer valid until 31<sup>st</sup> October 2010.

#### Forest Centre, Marston Moretaine

10% off tea, coffee and cake at the Forest Centre Lakeside Café. Offer applies to visitors with a train ticket to Stewartby or Millbrook valid on the day of their visit. One discounted purchase per person. The Forest Centre is a pleasant walk or cycle ride from Millbrook station. Offer valid from until 31<sup>st</sup> August 2010.

For further information on any aspect of MVCRP please contact Stephen Sleight on 01234 832645 e-mail [stephens@bedsrcc.org.uk](mailto:stephens@bedsrcc.org.uk) or visit [www.marstonvalecommunityrail.org.uk](http://www.marstonvalecommunityrail.org.uk)

### BOW BRICKHILL CLUB JUNE MEETING

At our meeting on Tuesday June 1st, we had the pleasure of welcoming Doreen Adcock who had been one of the earliest members of the club, but due to her commitments as a swimming instructor she was unable to continue her membership.

However, on this occasion we were very proud to welcome her as a speaker, having been selected as "Unsung Hero of the year 2010". Doreen spoke of her work in helping children and adults to learn to swim, some of whom had reached a very high standard, and the pride she felt in their achievement.

The afternoon continued with our strawberry and cream tea followed by our monthly quiz and the drawing of our raffle, once again bringing our meeting to a close.



Our next meeting will be on **July 6<sup>th</sup>**, when we shall meet in the Pavilion car park at 1.30pm. ready to be taken to the Woburn Safari Park where we are can look forward to an exciting afternoon.

### MP's SURGERY

Iain Stewart MP will be holding his surgery at

The Memorial Hall, 4 High Street, Woburn Sands on:

Friday 30th July 2010

4 – 6pm

### WOBURN SANDS ROYAL BRITISH LEGION

Woburn Sands Royal British Legion is on the lookout for new members.

If you have ever served in the armed forces or have been a National Serviceman you can become a member.

The current membership level is getting quite low and if new members are not forthcoming the Branch may be forced to close.

If you are interested in joining please contact the Hon Secretary Mrs R. Tavender on 01908 582346.

## NATIONAL CHURCHES TRUST BIKE RIDE AND STRIDE SEPTEMBER 11<sup>TH</sup>

If you are interested in old buildings and saving them this is the day for you. The National Churches Trust is a body which helps look after old church buildings and from which we can request a grant if we need any repairs to our church. Our church needs to have the tower repaired so we need to raise at least £20,000; the total bill is around £70,000 the rest we hope is coming from grants etc.

A great day out for the family as churches all over the country open their doors to the public and as Milton Keynes has its fair share which are all accessible via the red ways it makes it easy for all the family, young and old, to go out on their bikes or you can go on foot or horse-back or even by car.

The idea is to get some sponsors and see how many churches you can visit. The most I have ever done is 22 but it is possible to do more; half the money goes to our church and the other half goes to the National Churches Trust. So let's see how many people we can get out and about on this day, and who can beat my record!

If you want help with planning your route and a red way map just ask. There are some very interesting churches. Broughton (no longer consecrated) has got old murals on the walls which are being restored; Willen church built by Dr Robert Hooke; Tattenhoe is tiny and only got electricity last year, which caused great excitement for all. There is always a warm welcome at Simpson, Woughton and Woolstone. Modern Churches: Kent's Hill has a submersion pool for christening and Downs Barn has a full peal of bells. You could also bike to Winslow on the Sustrans route and visit several of the churches there. Nearly every church offers you a drink and a biscuit so you may come back fatter than when you started!

Our own church will be open and the tower too (this is not for the faint-hearted but the view is wonderful) There will be teas and snacks available so we need some helpers at the church please, so if you can't bike perhaps you could do a couple of hour's duty at the church and maybe sponsor a rider. We can arrange lifts to the church for helpers.

So let's have a good day out and get some exercise too. If you can only do six churches or half a day that is fine, just do something. Further information from Sally Pepper 01908 375365  
Or [www.rideandstrideuk.org](http://www.rideandstrideuk.org)

## YOUTH CLUB

The Youth Club is booming – to such an extent that we have had to introduce a limit of 40 members! We have a great and lively bunch of young people (aged 9-16) with all sorts of interests, but the adult supervision is spread a bit thin.

This is why we are on the look out for new adult supporters.

If you are interested or feel you might be interested in helping with the Youth Club please contact any member of the Management Team for an informal chat.

Members are Beverley Thompson, Nick Wagstaff (both on telephone MK 372192 or email [n.w.wagstaff@bopenworld.com](mailto:n.w.wagstaff@bopenworld.com)), Georgy Holden and Stuart Leeming. We would be really grateful for some fresh assistance from the start of the new term in September. The Youth Club meets on the first and third Thursdays of each month, from 7.00 p.m. to 9.00 p.m.

Following up the sailing evening in May the Youth Club made a second trip to the Caldecotte Xperience, Simpson on 17 June, this time for a session on tunnelling and archery. The final meeting of the summer term will be held at the Pavilion on 15 July, and will feature a barbecue. We are trying to organise a special day or half day event over the summer period.

Please keep an eye on the Youth Club website [www.bbyc.org.uk](http://www.bbyc.org.uk) for further details.

## WOBURN SANDS BIG BAND SOCIETY

**Thursday 15th July  
7pm for 7.30 pm  
Ellen Pettit Memorial Hall**

James Goff "Big Bands and Swinging Organists  
and  
Angie Milne "Weather or Not"



ENTRY: £2.00 Non members £3.00

Free car parking available behind the shops in the High Street, entry from Russell Street

For further information call  
David Higgs, 01908 583937, or Rex Harris, 01908 281235

## ALL SAINTS CHURCH—NEWS

### Reverend John Waller

As you may be aware the Reverend John Waller is taking a 3 month sabbatical and will not be available until September. Church services will continue as normal with visiting clergy. If however during this period you need the services of a vicar please contact the Wardens (Stuart Leeming 372032 and John Wales 373907) and a visit will be arranged.

### Christian Aid

Thank you very much to all in the village who contributed to the house to house collection - both in delivering the envelopes, and in the giving. This year we collected **£385.27** - nearly £100 more than last year. So a particular thank you, especially when many are feeling the effects of the credit crunch

### Special Family Services

You may be aware that over the last few months we have been holding a series of special all age worship services in the 4 different churches that make up our Benefice. The next of these will be held in the community hall in Stoke Hammond on Sunday 4th July. We are hoping for good weather to enable us to have some activities outside.

### Harvest

It may seem a long way ahead, but here's a date for the diary:  
**Sunday 12th September**

At 1100 there will be a family service in the church and this will be followed by a bring and share harvest lunch.

This takes the place of the harvest supper which has often been held on a Saturday evening. Come and join us! Further information from Rosemary Clarke 370811

### Roving Supper

Yet another very successful evening's entertainment was enjoyed last month and on behalf of all the participants, we would like to thank Rosemary and Andrea for all their efforts in organising the event and coping with the logistics of the evening.

## CHURCH ROTAS



JULY	FLOWERS	CLEANING
4th	L Drabble	A Cookson
11th	L Drabble	A Cookson
18th	D Kesterton	W Mills
25th	D Kesterton	W Mills
AUGUST		
1st	S Robinson	S Pepper
8th	S Willis	B Morris
15th	S Willis	B Morris
22nd	K Leeming	A Duff
29th	K Leeming	A Duff

## ALL SAINTS LUNCH CLUB

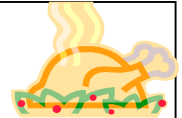
The next meetings of the lunch club will be

**Sunday 25<sup>th</sup> July and**

**Sunday 22nd August**

12.15pm for 12.30pm  
in the church hall as usual

Please book in with Stuart and Kay Leeming on 372032



## BROWNIES' Mile of 2ps

The Brownies would like to thank everyone for their generous donations to the 'Mile of 2ps' attempt.



We raised **£152** which we calculate at 211 yards so quite a long way off the mile but nevertheless a welcome contribution to Church funds!

**SERVICES IN THE BENEFICE**

**Bow Brickhill  
All Saints**

**4th July**  
9.30am Holy Communion

**11th July**  
11.00am Family Service

**18th July**  
6.00pm Evensong

**25th July**  
8.00am Holy Communion

**Great Brickhill  
St Mary the Virgin**

**4th July**  
9.30am Holy Communion

**11th July**  
9.30am Morning Worship  
6.00pm Evensong

**18th July**  
9.30am Holy Communion

**25th July**  
11.00am Family Service

**Stoke Hammond  
St Luke**

**4th July**  
11.00am Family Service

**11th July**  
9.30am Holy Communion

**18th July**  
8.30am Holy Communion

**25th July**  
9.30am Morning Worship

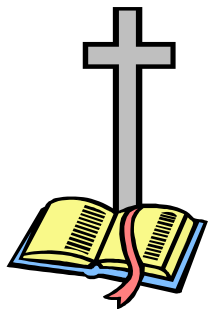
**Little Brickhill  
St Mary Magdalene**

**4th July**  
No Service

**11th July**  
11.00am Morning Worship

**18th July**  
11.15am Family Service

**25th July**  
9.30am Holy Communion



**Bow Brickhill All Saints**

**1st August**  
9.30am Holy Communion

**8th August**  
11.00am Family Service

**15th August**  
6.00pm Evensong

**22nd August**  
8.00am Holy Communion

**29th August**  
10.00am Benefice Holy Communion at Stoke Hammond

**Great Brickhill  
St Mary the Virgin**

**1st August**  
9.30am Holy Communion

**8th August**  
9.30am Morning Worship  
6.00pm Evensong

**15th August**  
9.30am Holy Communion

**22nd August**  
11.00am Family Service

**Little Brickhill  
St Mary Magdalene**

**1st August**  
No Service

**8th August**  
11.00am Morning Worship

**15th August**  
11.15am Family Service

**22nd August**  
9.30am Holy Communion

**Stoke Hammond  
St Luke**

**1st August**  
11.00am Family Service at Methodist Church

**8th August**  
9.30am Holy Communion

**15th August**  
8.30am Holy Communion

**22nd August**  
9.30am Morning Worship

**29th August**  
10.00am Benefice Holy Communion

