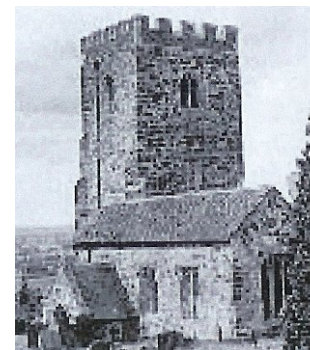


DATES FOR YOUR DIARY—FEBRUARY

Monday 1st	Line Dancing. 7.00pm. Pavilion.
Tuesday 2nd	Bow Brickhill Club. 1pm.to 3pm. Pavilion.
Wednesday 3rd	Brownies. 6.00 - 7.15pm. Church Hall. Bow Brickhill History Society. 7.30pm The Wheatsheaf
Thursday 4th	Youth Club. 7.00pm to 9.00pm Pavilion
Monday 8th	Book Club (contact Celia for Details) Line Dancing. 7.00pm. Pavilion.
Tuesday 9th	John the Barber. 2pm to 6pm. Greenways Layby
Wednesday 10th	Brownies. 6.00 - 7.15pm. Church Hall.
Thursday 11th	Parish Council Meeting. 7.30pm. Pavilion. Click and Clack. 7.30pm. The Wheatsheaf
Monday 15th	Line Dancing. 7.00pm. Pavilion.
Wednesday 17th	3 Parishes Outing to Northampton. Leaving 10.00am
Thursday 18th	Youth Club. 7.00pm to 9.00pm Pavilion Woburn Sands Big Band Society. 7pm for 7.30pm. Ellen Pettit Memorial Hall Woburn Sands
Monday 22nd	Line Dancing. 7.00pm. Pavilion.
Tuesday 23rd	John the Barber. 2pm to 6pm. Greenways Layby
Wednesday 24th	Brownies. 6.00 - 7.15pm. Church Hall.
Thursday 25th	Women's Institute. 7.30pm. Pavilion. Talk on 'Hats'. Competition for item with the letter L
Sunday 28th	All Saints Lunch Club. 12.15 for 12.30pm. Church Hall.

Bow Brickhill Parish News



FEBRUARY 2010

Contents

Contacts	2
Events	3
News and Events	4 & 5
Church News	6
Services	7
BB Club	8
WI	9
Energy Saving Trust	10
Events	11
Diary of Events	12

No 369



Bow Brickhill Parish Council

Parish Clerk Julie Summerfield
12 Station Road
07904 339391

bowbrickhill.clerk@jdsummerfield.com

Councillors:

Georgy Holden 372626
Kay Leeming 372032
Beverley Thompson 372192
Stephen Archer 07788 446470

Pavilion Bookings

Gill Cannell
373602
email
bowbrickhillpavilion@gmail.com

Chair

Rupert Fairclough
37 Station Road
Tel. 367711

Pavilion Caretaker

Eddie Chesse
370486



CONTACTS

Lunch Club: Kay and Stuart on (372032)

Book Club: Celia on (07776 136828) celiarsherratt@yahoo.co.uk

Bow Brickhill F.C: Odette Holland (370904) or Roy Toombs (375151)

Brownies: Sally Pepper (375365)

Buckaneers (Model Club): Derek Giles (374494)

Church Wardens: Stuart Leeming (372032) or John Wales (373907)

Click & Clack: Elaine Boscott (377543) or Gill Cannell (373602)

Line Dancing: Jan Cade (07721 420176)

Parents & Toddlers: Alison Goodyer (368212)

Parish News: Sally Robinson sallyhawtin@hotmail.co.uk

Website, E-Group and History Society: sue@bowbrickhill.com

Women's Institute: Sylvia Fox (378289)

Youth Club: Beverley Thompson (372192)

Thames Valley Police Non Emergency: (08458 505505)

David Hopkins – Danesborough Ward Borough Councillor for Bow
Brickhill: (01908 582632) david.hopkins@milton-keynes.gov.uk



WOBURN SANDS BIG BAND SOCIETY

**THURSDAY 18th February 2010,
7pm for 7.30 pm**

Ellen Pettit Memorial Hall, Woburn Sands

**Colin Skinner
“President’s Programme”**

and

**Frances and Derek Davies
“A Fine Romance”**



ENTRY: Members £2.00
Non members £3.00

Free car parking available behind the shops in the High Street,
entry from Russell Street

Membership application forms available at the desk.

For further information call
David Higgs, 01908 583937, or Rex Harris, 01908 281235

THE SANDS SINGERS

can't sing??
oh yes you can!!!

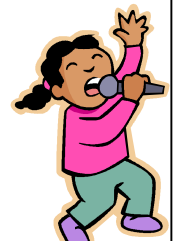
come and join us for a sing song

music for all ages from all ages

we will sing what you want

Bach to Beatles Beebop and beyond

**starting Friday 22nd January
7-9p.m.
at the
Institute in Woburn Sands**



LOVE FOOD HATE WASTE

UK households are throwing away 8.3m tonnes of food a year, most of which is perfectly edible. A typical family with kids bins £680 worth. Equally unsettling is the environmental cost - the wasted water and energy in growing and transporting uneaten food and the methane it produces in landfill. So, how can we do better?

1) Send less food to landfill

WRAP, the UK authority on waste & recycling, recommends that we plan meals, manage portions, keep an eye on 'use by' dates, and freeze surplus (See lovefoodhatewaste.com).

2) Compost food waste

Over 30% of average household waste could be composted. Peelings and tea bags can be converted into rich food for your garden. Home composting doesn't starve waste of oxygen so it releases very little of the potent greenhouse gas methane

3) Recycle food containers

On average the UK resident sends 2000kg of waste to landfill every year. Why not recycle? Aluminium cans are one of the most cost effective materials to recycle. Compared to manufacture from scratch around 95% of energy can be saved. 80% of all glass sent to recycling reappears in the UK, mostly as new bottles and jars.



For more green, money saving tips, call the Energy Saving Trust on **0800 512 012**.



3 PARISHES OUTING
NORTHAMPTON
(stopping at Morrisons)
FARE: £5.00



WEDNESDAY 17th FEBRUARY 2010

DEPARTING 10:00 AM

Returning at Approximately 4:00pm

PICK UP POINTS

CONTACT FOR TICKETS

Church Road;
Greenways

Julie 07950 269233

Available to all parishioners over 60 living in the three parishes
Sponsored by: Bow Brickhill Parish Council;
Wavendon Parish Council; Woburn Sands Town Council

AGE Milton Keynes
Concern

VILLAGE E -GROUP

Want to keep in touch? Working all the time?
Don't see your neighbours as often as you'd like?

Why not join the Bow Brickhill egroup online
which you will find at
<http://groups.yahoo.com/group/BowBrickhill/>.

Open to anyone living in or very near Bow
Brickhill, it's free to join.



COMMUNITY SPEEDWATCH

Speeding is one of the factors that most affects the quality of life in communities –no more so than Bow Brickhill where in the most recent survey of village residents 93% of you said that you felt speeding traffic was a problem. We now have an opportunity to do something about it, so please read on.



Speeding contributes to the severity of road traffic collisions and increases the impact on the lives of people in the community. Community SpeedWatch is a traffic monitoring scheme coordinated by Thames Valley Police in partnership with local councils and other stakeholders, but managed and run by neighbourhood policing teams and community volunteers.

Community volunteers work alongside Thames Valley Police officers to identify vehicles which break the speed limit. Registration numbers are entered onto a database which produces a letter informing the registered owner that their vehicle has been noted to have exceeded the speed limit and asking them not to do so in the future. If the same registration number is logged in another SpeedWatch anywhere within Thames Valley, the owner will receive another letter advising them that if they are caught a third time, the information will be passed onto Roads Policing, who may take further action. In practice the very presence of people in high visibility jackets by the roadside slows the traffic down.

We now need volunteers from the village to be trained to use the equipment (it's very simple to set up and operate) and to become part of the Bow Brickhill SpeedWatch Team. You need to be over 18 and we need a minimum of 6 people. If you would like to help reduce the speed of traffic please contact PC Stuart Folwell by email at stuart.folwell@thamesvalley.pnn.police.uk or call him on 0845 8505 505.

BOW BRICKHILL WI



Our speaker this month was Paul Jarrett MBE from the Royal National Mission to Deep Sea Fishermen (Fishermen's Mission for short!) Paul explained that not knowing what he wanted to do on leaving school, he went to 'help out' at their Head Office in London and stayed with the Mission until his retirement 40 years later. The Mission was founded in 1881 by Ebenezer Mather as a charity, run on Christian principles, and in 1896 Queen Victoria became its patron and the word 'royal' was added to its title. It aims to provide financial, emotional and pastoral support to fishermen and their families throughout the UK by providing accommodation, food, companionship and recreational activities. Interspersed with sad stories connected with his work, Paul included many humorous tales and admitted the anomaly that he did not like fish, could not swim and suffered from sea-sickness!

Our chosen charity for the year was Willen Hospice and raised £155 mainly from a monthly sales table. Philip Smith, a member of Willen's Management Committee attended the meeting to thank members for the donation and he explained a little about the Hospice, particularly from a financial viewpoint. The running costs are £4 million with only £880,000 coming from Government sources, so donations such as ours are essential and his team were extremely grateful for members' generosity.

The competition for an item beginning with letter 'K' was won by Yvonne Alton with her Kafuh tea kettle. Other items included Koala bears, decorative knives, a Korean knife and chess King and knight pieces.

BOW BRICKHILL CLUB JANUARY AND DECEMBER MEETINGS

The December meeting of the club took place on Tuesday 1st, when we spent a very entertaining afternoon, starting with a party style buffet lunch followed by a jigsaw competition, quiz and raffle. On Thursday December 10th the club met again, this time at "The Wheat-sheaf", where we enjoyed spending more time together and enjoying our Christmas lunch.

All the excitement of Christmas was soon upon us but this happy festival was over all too soon and we were in the throes of winter and seasonal weather. We were however, very fortunate in having a frost and snow free day for our meeting on the 5th of January when, after another buffet lunch, and "Wild Life" quiz (Won by Mr Mick Parker) we were entertained with a very interesting talk by a representative from the Woburn Safari Park. The Raffle drawn, and cups of tea consumed, it was time to bid our friends adieu and make our way home.

The club will meet again on **Tuesday February 2nd from 1.00-3.00pm** when, after lunch, we shall have an afternoon of games and competitions while finding time to make plans for an eventful Spring.

WOBURN SANDS FOLK FESTIVAL 2010

CEILIDH

**20th February
7.30pm
at Woburn Sands Social Club**

Dancing to **HOGSTY OAK** with CALLER SUE MALLESON

Adults £5, Children £3

Or take out Festival Membership with ceilidh tickets included
Adults £10, Family (two adults + two children under 16) £15.
For tickets & membership - call 01908 582842.



THE WHEATSHEAF

The Wheatsheaf is now open for breakfasts from Tuesday to Saturday from 10.00am



Please come along and have a Full English or just a light bite from our extensive breakfast menu, or maybe just a coffee and a muffin, a bottomless cup of coffee will be available for those eating with us.

Please book early for:
Valentine's Day and Mothers day



Please phone for details: 01908 374795

HISTORY SOCIETY

We are now meeting every first Wednesday of the month at The Wheatsheaf at 7.30 pm,

This means that our next meeting will be on 3rd of February.

The annual subscription is £10 and membership is open to anyone with an interest in the history of the village.

COPY DEADLINE

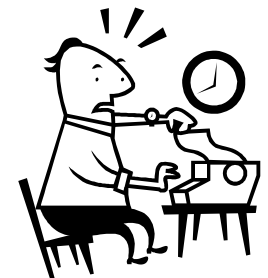
Contributions for the next issue should be sent by

Friday 19th February to:



Gill - email bowbrickhillpavilion@gmail.com

or

Sally – email sallyhawtin@hotmail.co.uk




SERVICES IN THE BENEFICE

CHURCH ROTAS		
		
FEBRUARY	FLOWERS	CLEANING
7th	Mr and Mrs Fox	J. Lousada
14th	Mr and Mrs Fox	J. Lousada
21st	LENT	A. Duff
28th	LENT	A. Duff

CAROL SINGING

Over **£330** was collected by the carol singers, despite the arctic conditions on the second night.

Thanks go to all those who sang and collected or provided hospitality at the end of the evening, and a big thank you to everyone who gave so generously.




SERVICE IN CHURCH HALL

The family service on

14th February at 11.00am

will be held in the church hall.



ALL SAINTS LUNCH CLUB

In spite of the snow and ice 16 guests and helpers were able to attend the December meeting of the club and enjoyed a traditional Christmas lunch.



The February meeting will take place on **Sunday 28th** in the Church Hall at **12.15pm for 12.30pm**

To book in please contact Kay and Stuart on 372032.

Bow Brickhill All Saints

7th February
9.30am Holy Communion

14th February
11.00am Family Service In Church Hall

17th February Ash Wednesday
10.00am Benefice Holy Communion at St Luke's Stoke Hammond

21st February
11.00am Matins

28th February
8.00am Holy Communion

Little Brickhill St Mary Magdalene

7th February
No Service

14th February
11.00am Morning Worship

21st February
11.15am Family Service

28th February
9.30am Holy Communion

Great Brickhill St Mary the Virgin

7th February
9.30am Holy Communion

14th February
9.30am Morning Worship
6.00 pm Evensong

21st February
9.30am Holy Communion

28th February
11.00am Family Service

Stoke Hammond St Luke

7th February
11.00am Family Service at Methodist Church

14th February
9.30am Holy Communion

17th February Ash Wednesday
10.00am Benefice Holy Communion

21st February
08.30am Holy Communion

28th February
9.30am Morning Worship

