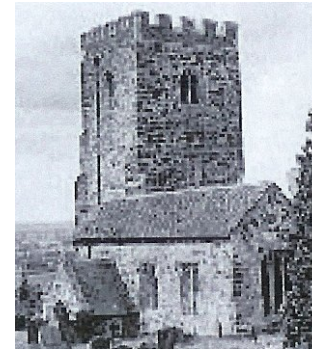


Bow Brickhill Parish News



August & September 2011

Contents

	Contacts	2
	History Society and Events	3
	BB Club	4
	School Report	5
	Events	6 & 7
No 384	Church News	8 & 9
	Church Services	10 & 11
	More Church News	12
	Woodworks Festival & MVCRP	13—15
	Information	16
	Dates for Your Diary August	18
	Dates for Your Diary August	19

Bow Brickhill Parish Council

Parish Clerk Julie Summerfield
12 Station Road
07904 339391

bowbrickhill.clerk@jdsummerfield.com

Chair:

Beverley Thompson 372192

Deputy Chair

James Byles 07970749422

Councillors:

Ann Sidgwick RFO 368685

Phil Thomas

John Mears 01908 642441

Pavilion Bookings

Gill Cannell

373602

email

bowbrickhillpavilion@gmail.com

Pavilion Caretaker

Eddie Chesse

370486

CONTACTS

Lunch Club: Kay and Stuart on (372032)

Book Club: Beverley Thompson (372192);
beverleydianethompson@gmail.com

Bow Brickhill Club: Chris Loak (373768)

Bow Brickhill F.C: Odette Holland (370904) or Roy Toombs (375151)

Brownies: Sally Pepper (375365)

Buckaneers (Model Club): Derek Giles (374494)

Church Wardens: Stuart Leeming (372032) or John Wales (373907)

Click & Clack: Elaine Boscott (377543) or Gill Cannell (373602)

Line Dancing: Jan Cade (07721 420176)

Parish News: Sally Robinson sallyhawtin@hotmail.co.uk

Website, E-Group and History Society: sue@bowbrickhill.com

Women's Institute: Sylvia Fox (378289)

Youth Club: Beverley Thompson (372192)

Thames Valley Police Non Emergency: (08458 505505)

Email: RuralSouthNHPT@thamesvalley.pnn.police.uk

David Hopkins – Danesborough Ward Borough Councillor for Bow
Brickhill: (01908 582632) david.hopkins@milton-keynes.gov.uk

DATES FOR YOUR DIARY—SEPTEMBER

Thursday 1st	Youth Club. 7pm to 9pm Pavilion
Saturday 3rd and Sunday 4th	Woodworks Festival. Forest Centre and Millenium Country Park. Marston Moretain
Monday 5th	Line Dancing. 7.00pm Pavilion.
Tuesday 6th	Bow Brickhill Club 2.00pm-4.00pm Pavilion. John the Barber. 2pm to 6pm Greenways Layby
Thursday 8th	Parish Council Meeting. 7.30pm Pavilion
Saturday 10th	Bucks Historic Churches Sponsored Bike Ride
Monday 12th	Line Dancing. 7.00pm Pavilion. Book Club. Contact Celia 07776 136828 for details
Weds 14th	Drop in Afternoon. 2.30pm to 4.30pm Church Hall Brownies. 6.00pm-7.15pm. Church Hall.
Thursday 15th	Youth Club. 7.00pm Pavilion Woburn Sands Big Band Society. 7pm for 7.30pm. Ellen Pettit Memorial Hall Woburn Sands
Saturday 17th	ASTRA Speakeasy Night. 7.30pm to 11.30pm. Pa- vilion
Monday 19th	Line Dancing. 7.00pm Pavilion.
Tuesday 20th	John the Barber. 2pm to 6pm Greenways Layby
Weds 21st	Brownies. 6.00pm-7.15pm. Church Hall.
Thursday 22nd	WI. 7.30pm Pavilion. Entertainment—The Linslade Singers. Competition letter A
Sunday 25th	All Saints Lunch Club. 12.15 for 12.30. Church Hall
Monday 26th	Line Dancing. 7.00pm Pavilion.
Weds 28th	Brownies. 6.00pm-7.15pm. Church Hall.

DATES FOR YOUR DIARY—AUGUST

Monday 1st	Line Dancing. 7.00pm Pavilion.
Tuesday 2nd	Bow Brickhill Club 2.00-4.00pm Pavilion.
Wednesday 3rd	Bow Brickhill History Society. Walking Tour Danesborough Fort
Thursday 4th	Youth Club. 7pm to 9pm. Pavilion
Monday 8th	Line Dancing. 7.00pm Pavilion. Book Club. Contact Beverley 372192 for info
Tuesday 9th	John the Barber. 2pm to 6pm Greenways Layby
Weds 10th	Drop in Afternoon. 2.30pm to 4.30pm Church Hall
Thursday 11th	Parish Council Meeting. 7.30pm Pavilion
Monday 15th	Line Dancing. 7.00pm Pavilion.
Thursday 18th	Youth Club. 7pm to 9pm. Pavilion Woburn Sands Big Band Society. 7pm for 7.30pm.
Monday 22nd	Line Dancing. 7.00pm Pavilion.
Tuesday 23rd	John the Barber. 2pm to 6pm Greenways Layby
Thursday 25th	WI. 7.45pm Pavilion. 'Coincidences'. Competition letter Z
Sunday 28th	All Saints Lunch Club. 12.15pm for 12.30pm. Church Hall
Monday 29th	Bank Holiday

BOW BRICKHILL HISTORY SOCIETY

In 1896 the Parish Council felt it was necessary to fence the saw pit which was situated next to Lantern Cottage on Station Road (where a much newer house now stands). The pit was mainly used for cutting large lengths of elm to make coffins!

For the July meeting the group enjoyed a fascinating evening with Roger Kitchin from The Living Archive. His illustrated talk 'Everybody has a Story' was full of poignant tales and funny anecdotes, we even heard the voice of Florence Nightingale! I am sure his advice on how to record oral history will be invaluable. Unbelievably 2 ladies travelled all the way from a village near Towcester for the event!

The August and September meetings will take the form of field trips, on August 3rd we are taking a walking tour of The Danesborough Fort and in September we are going to the archive section of the county museum to look at the artefacts found at Danesborough during the archaeological dig in the 1920's. The next meeting to be held in the village will be the AGM in The Wheatsheaf on October 5th.

A reminder for your diary: The Bow Brickhill Feast will be held in the Pavilion on Saturday 12th November.

For further details of any of our events please contact Mary Preen 647003

THE DANESBOROUGH OLYMPICS

Advance notice of our very own Olympics! Danesborough Ward are planning an extended weekend of sporting and social events to take place shortly before the London Olympics next year and it is hoped to run a number of sporting competitions between Wavendon, Woburn Sands, Bow Brickhill and Little Brickhill.

Plans are being made to include tennis, bowls, golf, football, cricket, darts and mini athletics matches in this event which will be around **20-22 July 2012**.

Watch this space for details of how you can represent your community in any of the events.

BOW BRICKHILL CLUB JUNE MEETING

On the morning of July 6th members of the club boarded a coach for the beginning of their annual summer outing.

After a short journey we arrived at Page's Park Station, a very small railway station in Leighton Buzzard, where, after purchasing our post-cards, we were conducted to Dobbers Buffet (the station café) where we enjoyed our lunch. After lunch we found our way to the platform to await the arrival of the steam train that would take us on our journey to Stonehenge Works where we were able to leave the train and investigate our destination. After a short visit to the far reaches of Leighton Buzzard, it was time to return to the train. As the whistle blew and the guard waved his red flag we remembered the days when we made the journey from Bletchley to Bedford by steam train.

After our train ride we returned to the coach and set off for the second part of our outing, this time by making our way to Dunstable Downs and watching the gliders as we arrived at the Visitors' Centre in time for a delicious cream tea.

All too soon we were on our way home, having enjoyed a very interesting and memorable day out.

Our next meeting will be in the **Pavilion at 2.00 pm on Tuesday August 2nd**, when there will be games and competitions with another cream tea.

Our September meeting will be in the **Pavilion at 2.00 pm on Tuesday September 6th**, when we shall once again have the pleasure of a visit from Derek and Brian, who will be speaking to us about training dogs for blind people.

HOLIDAY HOME TO RENT

Get away from the English weather and take advantage of cheaper rates in Spain.

House to rent in Estepona - between Gibraltar and Malaga.
Sleeps 7, 100m from the sea.

Contact Olivia in Bow Brickhill: 01908 372739 or 07979755501

MILTON KEYNES COMMUNITY MEDIATION SERVICE

Conflict resolution in the community

379Acorn House, Midsummer Boulevard, Central Milton Keynes, MK9 3HP Tel: 01908 200828

E-mail: mkcms@mkcommediation.org.uk Fax: 01908 200842
Website: mkcommediation.org.uk

The first aim of our Constitution is to resolve community conflict amicably – whether it's within the family unit at home, as neighbours, on the local estate or in the local school. We are an independent community mediation service. We offer an impartial, free and confidential service to all residents of MK. We are accessible to the majority of residents and are mindful of all equality issues.

Participation in mediation is voluntary. Our success rate for mediation participation is over 80%. We handle an average of 250 cases per year, with an overall success rate in excess of 70%. We aim to facilitate positive communication between two parties and to achieve a win/win situation in most cases. Our CMS casework covers Anti - Social Behaviour, Harassment, Family Communication Breakdown, Children Issues, Racial issues, Privacy Trespass issues and Noise including Music casework. We are part of the Safer MK partnership agency and of the preventative strategic framework of the MK Council, Thames Valley Police and Social Landlords.

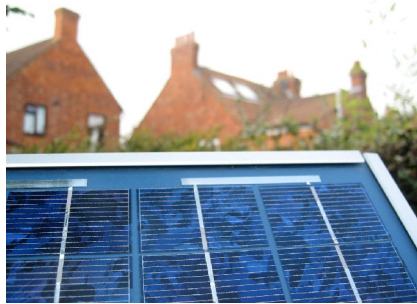
Our second aim is to recruit, retain and support volunteers from all the Parish and Town Councils of MK. Due to our regular fund-raising, we can offer volunteers a free 60+ hour Basic Community Mediation Training Programme giving the volunteers a transferable skill and a qualification at OCN Level 3 to 4. In exchange, as part of the agreement to mediate, all trained CMS volunteer mediators, irrespective of their working or personal backgrounds, offer our mediation service, a regular two to three hours of voluntary time per week.

Each training programme costs us an average of £10,000 and we are desperately seeking resources to increase our capacity. We recruit volunteer trainee mediators from all areas of Milton Keynes and would be happy to hear from any Bow Brickhill resident who is interested in becoming a volunteer mediator.

We envisage more demand for our service rather than less from people who are facing various dilemmas in the current climate.

IS MY HOME SUITABLE FOR SOLAR?

UK Feed-in Tariffs (FITs) make solar photovoltaic (PV) panels an attractive investment for homeowners who have savings. The soon to be introduced Renewable Heat Incentive (RHI) will also provide better returns for solar water heating (SWH).



But there are some points to consider before chasing quotes:

Which way does my roof face?

A south facing roof is best but panels can deliver very good results facing anywhere between east and west, through south.

□

Do I have the roof space?

A minimum of about 10m² of panels are needed for solar PV and approximately 4m² for SWH (based on a household of 4 people). Sections of roof shaded by trees or buildings are to be avoided.

Will I get the most benefit?

Daytime users of electricity and hot water have much to gain by directly replacing energy they'd otherwise have to pay for with free solar energy.

Can I afford it?

An ideal budget would be in excess of £8,000 for PV and £3,500 for SWH. It's important to remember that in order to be eligible for FITs and RHI your system must be installed by an MCS certificated installing company.

To find out more, check out Cocoon's new on-line 'Solar Suitability Checker'. This tool allows you to find your roof on a satellite map, check its size and orientation, and see what returns an investment in solar might deliver. No personal details are required. The tool will go live in Summer 2011 at www.cocoonyourhome.co.uk

BOW BRICKHILL CHURCH OF ENGLAND (VA) PRIMARY SCHOOL

2011 Summer Term

Another successful year draws to a close at the village school.

- Mrs West has been piloting a project using mixed ability groups for maths problem solving. This has had a positive impact on their confidence at trying questions individually and developed their skills.
- Cedars are preparing for a poetry performance later this term. This has really inspired the children to read and perform poetry and has helped with speaking and listening skills.
- Cedars completed their percussion 'Wider Opportunities' programme in the Spring Term and gave a performance to parents.
- Year 2 pupils are practising songs for the music festival at MK Theatre.
- Cedars are swimming once a week this term at Woughton pool.
- Pupils across the school have had opportunities to take part in a number of sports festivals.
- This term all classes have had dinosaurs as their topic area. Cedars and Maples visited the Natural History Museum in Oxford which really inspired them.
- Mrs Tame organised a range of activities during Book Week including dressing up as a favourite book character.
- Year 5 pupils enjoyed a residential trip to the Caldecotte Centre where they experienced climbing, archery, rowing and sailing.
- Pupils raised money for Red Nose Day by dressing up and also holding a cake sale.
- Maples pupils all did cycle training and were very successful.
- Miss Evelyn spent a week visiting our partner school in Ghana.
- Joint activities took place with St. Mary's school around the theme of the Royal Wedding.
- Year 6 pupils took part in the Little Chef Challenge at Walton High.

...also Bow Brickhill School has collected 8416 Tesco vouchers this year. Thank you to all the residents who dropped them off .



ASTRA

All Saints Tower Restoration Appeal

Present

SPEAKEASY NIGHT

Saturday 17th September

7:30pm - 11:30pm

Bow Brickhill Pavilion

Rushmere Close, Bow Brickhill, MILTON KEYNES MK

A speakeasy, also called a blind pig or blind tiger, is an establishment that illegally sells alcoholic beverages. Such establishments came into prominence in the United States during the period known as Prohibition (1920–1933, longer in some states).

All proceeds in aid of All Saints Tower Restoration Appeal

Please complete the 'Gift Aid Form' as part of the ticket process
ASTRA will reclaim the Taxes paid.

Black Tie, Gangster or Gangsters Moll mandatory dress Code

Why not 'Dress to Kill'!

Tickets **£15.00**

Including light supper

Non Returnable and payable only in advance

Organiser: C/O 28 Church Road Bow Brickhill MK17 9LD



BLETCHLEY TO BEDFORD							Sunday						
		1	2	3	4	5	6						
Train ID		2T01JJ	2T03JJ	2T05JJ	2T07JJ	2T09JJ	2T11JJ						
From													
Timing Type		153	153	153	153	153	153						
Days Run													
BLETCHLEY		10.50	11.50	13.08	14.10	15.10	16.10						
Fenny Stratford		10.53	11.53	13.11	14.13	15.13	16.13						
Bow Brickhill		10.57	11.57	13.15	14.17	15.17	16.17						
Woburn Sands		11.01	12.01	13.19	14.21	15.21	16.21						
Aspley Guise		11.04	12.04	13.22	14.24	15.24	16.24						
Ridgmont		11.07	12.07	13.25	14.27	15.27	16.27						
Lidlington		11.11	12.11	13.29	14.31	15.31	16.31						
Millbrook		11.14	12.14	13.32	14.34	15.34	16.34						
Stewartby		11.18	12.18	13.36	14.38	15.38	16.38						
Kempston Hardwck		11.21	12.21	13.39	14.41	15.41	16.41						
Bedford St.Johns		11.28	12.28	13.46	14.48	15.48	16.48						

BLETCHLEY TO BEDFORD							Sunday						
		1	2	3	4	5	6						
Train ID		2T01JJ	2T03JJ	2T05JJ	2T07JJ	2T09JJ	2T11JJ						
From													
Timing Type		153	153	153	153	153	153						
Days Run													
BLETCHLEY		10.50	11.50	13.08	14.10	15.10	16.10						
Fenny Stratford		10.53	11.53	13.11	14.13	15.13	16.13						
Bow Brickhill		10.57	11.57	13.15	14.17	15.17	16.17						
Woburn Sands		11.01	12.01	13.19	14.21	15.21	16.21						
Aspley Guise		11.04	12.04	13.22	14.24	15.24	16.24						
Ridgmont		11.07	12.07	13.25	14.27	15.27	16.27						
Lidlington		11.11	12.11	13.29	14.31	15.31	16.31						
Millbrook		11.14	12.14	13.32	14.34	15.34	16.34						
Stewartby		11.18	12.18	13.36	14.38	15.38	16.38						
Kempston Hardwck		11.21	12.21	13.39	14.41	15.41	16.41						
Bedford St.Johns		11.28	12.28	13.46	14.48	15.48	16.48						

Forest Centre, Marston Moretaine

10% off tea, coffee and cake at the Forest Centre Lakeside Café. Offer applies to visitors with a train ticket to Stewartby or Millbrook Stations, valid on the day of their visit. One discounted purchase per person. The Forest Centre is a pleasant walk or cycle ride from Millbrook station.

Offer valid until 30th September 2011 except 3rd and 4th September.

London Midland Great Rail Sale!

Don't miss out on the latest Great Rail Sale! You can save 50% on off-peak day return and period return tickets up to 4th September.

There are lots of great days out to choose from. Visit www.londonmidland.com/sale for full details.

New Railway Walks Booklet!

MVCRP is preparing a station to station walks booklet, a series of walks between stations suitable for all abilities, due for publication shortly. Contact us for your free copy.

For further information on any aspect of MVCRP please contact Stephen Sleight on 01234 832645 e-mail stephens@bedsrcc.org.uk or visit www.marstonvalecommunityrail.org.uk

THE WOODWORKS! FESTIVAL

SATURDAY 3RD AND SUNDAY 4TH SEPTEMBER 2011
11.00 AM – 5.00 PM

THE FOREST CENTRE & MILLENNIUM COUNTRY PARK,
MARSTON MORETAINE (Nearest station: Millbrook)

Adults £6, Children and Concessions £4,
Get £1 off your Woodworks! entry ticket when you show your train ticket (one discount per person)

** Two days of wood craft, trees, machines, real ale, arena displays and fantastic folk & roots music **

** To help you get to this year's Festival we're running trains to Millbrook all weekend along the Marston Vale Line. Saturday's trains will run to the normal timetable.

There will be a special hourly train service on Sunday **

For further information or to sign up to our e-bulletin please contact Stephen Sleight: 01234 832645, email stephens@bedsrcc.org.uk or go online www.marstonvalecommunityrail.org.uk

WOBURN SANDS BIG BAND SOCIETY

Thursday 18th August 2011
7pm for 7.30 pm
Ellen Pettit Memorial Hall



Pete Meadows, with
"Let's hear it"

and

Maureen Meadows, with
"Here I go again"

Thursday 15th September 2011
7pm for 7.30 pm
Ellen Pettit Memorial Hall

Frank and Kevin Touhey,
From Montpelier Records
Titles to be announced



ENTRY: £2.00 Non members £3.00

Free car parking available behind the shops in the High Street, entry from Russell Street

For further information call
David Higgs, 01908 583937, or Rex Harris, 01908 281235

DEADLINE FOR NEXT ISSUE

Contributions for the next issue should be sent by **21st September** to:

Gill Cannell - email bowbrickhillpavilion@gmail.com

ASTRA - Pass the £1 Pound 16th July 2011

'True Dunkirk Spirit'

6.30 am

Overcast morning but doesn't look as bad as the forecast. Gazebos and signs put up in Church Road.

8.00 am

Rain commenced. Opened up the Church Hall, the venue for the all-important refreshments – no electricity, a 1949 joint outside Laburnum Cottage had blown. The electricity board arrived with the news there would be no chance of a repair until later in the afternoon!

10.00 am

Pouring cats and dogs, the drains struggling to cope!

10.15 am

Rain unbelievably getting heavier! News came that the disco would be unable to support the event, dancing in the street in wellingtons and sou'westers was not a real option anyway. Would the demonstration fire engine and recovery vehicle show up, they may be inundated with calls for help?

10.45 am

There seemed little chance of anybody turning out in the inclement weather and the prospect of raising £500 was rapidly disappearing.

Then our wonderful **Bow Brickhill** community spirit rose up above the rain clouds!

11.00 am

- The fire and recovery men arrived in their vehicles.
- Gas cookers, candles, food and drink all appeared in the Church Hall.
- A wind up record player was set up in a corner of the hall and a gentle dance demonstration commenced (talk about 'Air Raid Shelters' in The War – all that we lacked was Vera Lynn singing over the wireless)
- An all-important morale building 'Brew' was served by the ladies
- The Teddy Bear Tombola was trading well under its umbrella in London Lane despite the river flowing underneath the table.
- There was no chance of anything drying on the '1940's Washing Line' game, but people had a go.
- The Treasure Map was more like a nautical map but attempts to find the loot were made.
- A yellow plastic duck bobbed about happily in the Church Road Gully.
- The giant gazebo at the bottom of Church path offered some respite from the rain.
- The Cuddly Dog was given a name – 'Jonathan'.

Discover the Marston Vale Line – Bedfordshire's Local Railway!



The Marston Vale Line (Bedford – Bletchley) is a great way of getting out and about this summer. There are hourly services on Mondays to Saturdays from Bow Brickhill to both Bedford and Bletchley from 6 a.m. – 9 p.m. Change at Bletchley for the short journeys from Milton Keynes Central and Leighton Buzzard.

Bedfordshire concessionary travel pass holders travel at half price! The Marston Vale Line is also great value for groups or families with a GroupSave ticket through which up to four adults can travel for the price of two on off-peak services with up to four children traveling with the group for just £1 each – under 5s go free.

The Line has an active Community Rail Partnership. Marston Vale Community Rail Partnership (MVCRP) was formed in February 2007 to act as a bridge between the local communities and *their* railway.

Special Services for Woodworks! Festival at the Forest Centre!

MVCRP will again be running a special hourly Sunday service on the Marston Vale Line on **Sunday 4th September**.

Woodworks! passengers are asked to alight at Millbrook from which it is a pleasant 15 minute walk or cycle ride on surfaced paths to the Festival site. Alternatively a complimentary shuttle bus will be running from the station to the site all weekend. Normal timetable applies on the Saturday.

Special Offers at Local Attractions!

MVCRP has negotiated a number of special offers for rail passengers at local attractions:

Bletchley Park

20% discount on entry fess, valid on all types of ticket, adult, concession, child. Admission charges at Bletchley Park are season tickets giving you free entry for one year from the date of your first visit. Just show your valid Marston Vale train ticket for the discount!

Offer valid until 31st December 2011.

Bletchley Park is just a few minutes walk from Bletchley station.

CHURCH ROTAS

AUGUST	FLOWERS	CLEANING
7th	B Goodger	D Cook
14th	B Goodger	D Cook
21st	S Willis	S Boyes
28th	S Willis	S Boyes

SEPTEMBER

4th	L Drabble	A Cookson
11th	L Drabble	A Cookson
18th	A Spurdle	
25th	A Spurdle	

CHURCH NEWS

We are very pleased by the ongoing fundraising achievements of AS-TRA, reported elsewhere in the magazine, in particular the amazing efforts and good humour of all who were present at the 'Pass the Pound' event in the most trying weather conditions and with the added trial of a power failure along Church Road!

CHURCH HALL DROP-IN AFTERNOON

The drop-in has been running for two months and several people have taken the opportunity to call in during the afternoon to meet up with others, spend some time sewing and knitting, or just enjoy a cup of tea and a chat.

This month the hall will be open on **Wednesday August 10th** from 2.30pm to 4.30pm and all are welcome. The date in **September** will be **Wednesday 14th**.

FUTURE DIARY DATES

Our annual church open day in support of the Bucks Historic Churches Trust Sponsored Bike Ride takes place on Saturday 10th September. The church and tower will be open and tea and cakes will be on sale. So come along and take the opportunity to see the work recently completed within the tower and enjoy a panoramic view of the Buckinghamshire countryside.

Our Harvest service will be on **Sunday 9th October at 11.00am**.

There will be a harvest supper in the church hall on **Saturday 8th October** – details to follow.

ALL SAINTS LUNCH CLUB



The next meeting of the lunch club will be on

Sunday August 28th
at the church hall
12.15pm for 12.30pm.

In September the lunch club will be celebrating its **7th birthday!** It was formed in 2004 with the aim of providing a good lunch and fellowship in a friendly atmosphere and all are welcome, particularly those who live alone, to join us and enjoy some company and share a traditional Sunday lunch. The meeting will be on

Sunday September 25th

when we hope as many as possible will be able to share in this birthday celebration.

Please book in with Stuart and Kay Leeming on 372032

PER ARDUA AD ASTRA

Despite everything the fates threw at them, the **ASTRA**nauts were not defeated and held a successful 'Pass the Pound' fundraiser on Saturday July 16th. The rain poured down; the wind blew; the DJ had to cancel; the power on Church Road was out and the Electricity Board were unable to fix it. However, the community spirit was fantastic and over 150 people braved the unseasonable weather, with umbrellas and waterproofs, to gather in the candle-lit Parish Hall for refreshments, raffle, music and games before assembling on Church Path to form the Human Chain and Pass their Pounds up to the tower.

Our MP, Iain Stewart, gamely waded through the mud to open the proceedings and sound the klaxon to start the chain; while special guest, Mooie, MK Dons' mascot, was up at the church to receive the donations and proved a big hit with the children. The handsome Fire Crew from Broughton came with their fire engine to join in the fun – in full fire fighting gear they were able to keep dry!

The **ASTRA** team would like to thank everyone who so bravely took part and contributed in so many ways to the success of the day. Despite the terrible weather, everyone had a marvellous time and, thanks to all those who supported the stalls and games and gave such generous donations, we made a whopping **£955!!**

SERVICES IN THE BENEFICE

Bow Brickhill All Saints

7th August
9.30am Holy Communion

21st August
6.00pm Evensong

14th August
11.00am Family Service

28th August
10.00am Benefice Holy
Communion at Great
Brickhill

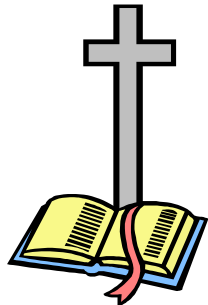
**Great Brickhill
St Mary the Virgin**

7th August
9.30am Holy Communion

14th August
9.30am Morning Worship
6.00pm Evensong

21st August
9.30am Holy Communion

28th August
10.00am Benefice Holy Communion



**Stoke Hammond
St Luke**

7th August
11.00am Family Service at
Methodist Church

14th August
9.30am Holy Communion

21st August
8.30am Holy Communion

**Little Brickhill
St Mary Magdalene**

7th August
No Service

14th August
11.15am Morning Worship

21st August
11.15am Family Service

**Bow Brickhill
All Saints**

4th September
9.30am Holy Communion

18th September
6.00pm Evensong

11th September
11.00am Family Service

25th September
8.00am Holy Communion

**Stoke Hammond
St Luke**

4th September
11.00am Family Service

11th September
9.30am Holy Communion

18th September (Harvest)
9.30am Holy Communion

25th September
9.30am Morning Worship

**Little Brickhill
St Mary Magdalene**

4th September
No Service

11th September
11.15am Morning Worship

18th September
11.15am Family Service

25th September
9.30am Holy Communion

**Great Brickhill
St Mary the Virgin**

4th September (Patronal Festival)
9.30am Holy Communion

11th September
9.30am Morning Worship
6.00pm Evensong

18th September
9.30am Holy Communion

25th September
11.00am. Family Service

